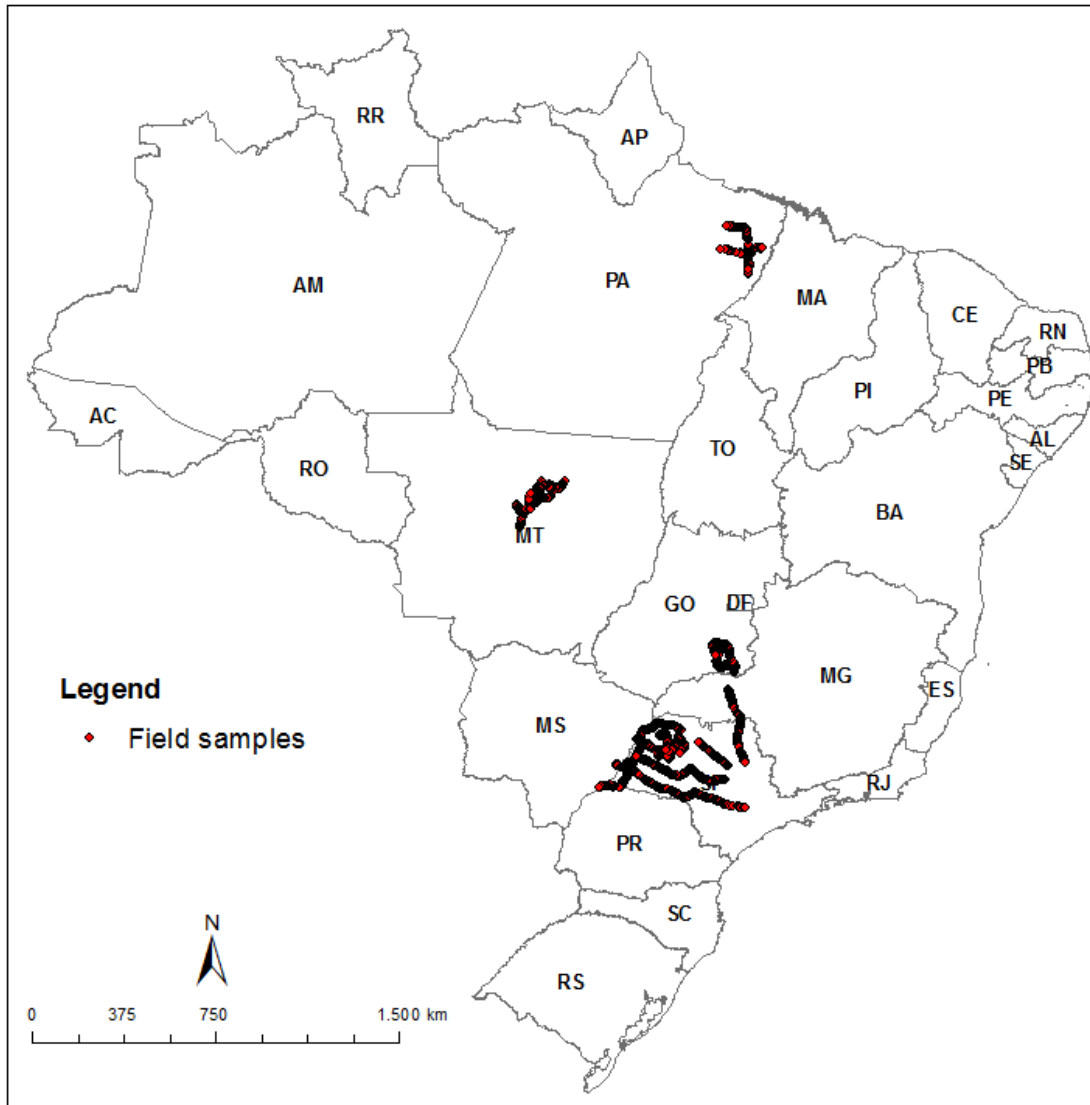


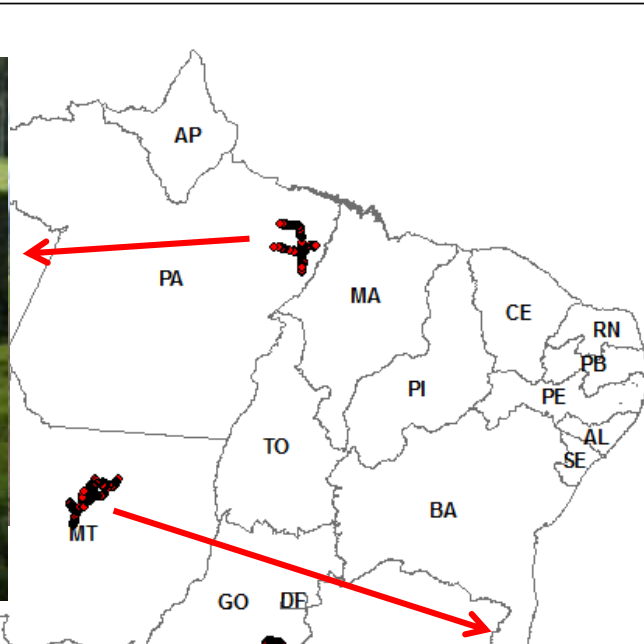
Objectives:

- To characterize different pasture intensification systems using time series of satellite images
- To develop classification algorithms to map pasture and integrated systems

Test sites and field campaigns

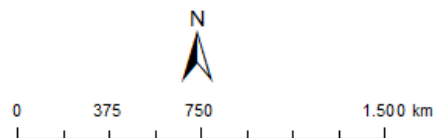


Field campaigns

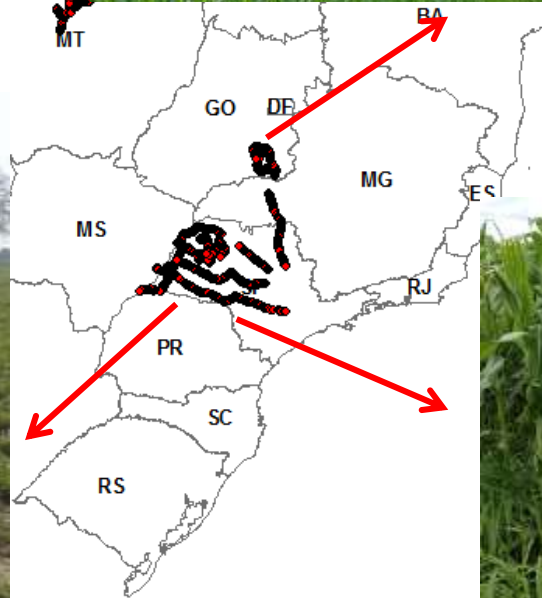
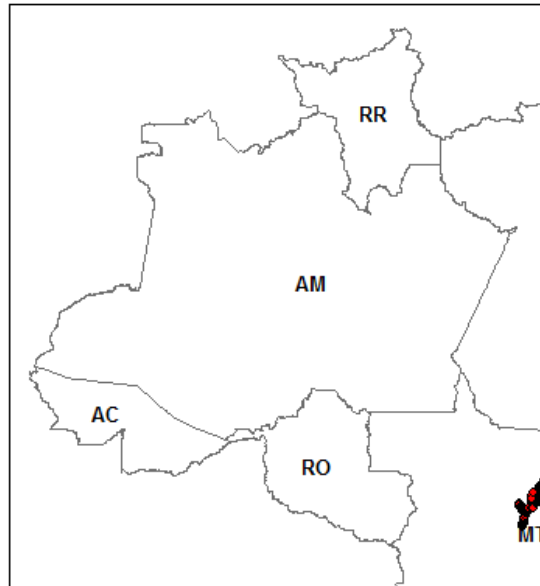


Legend

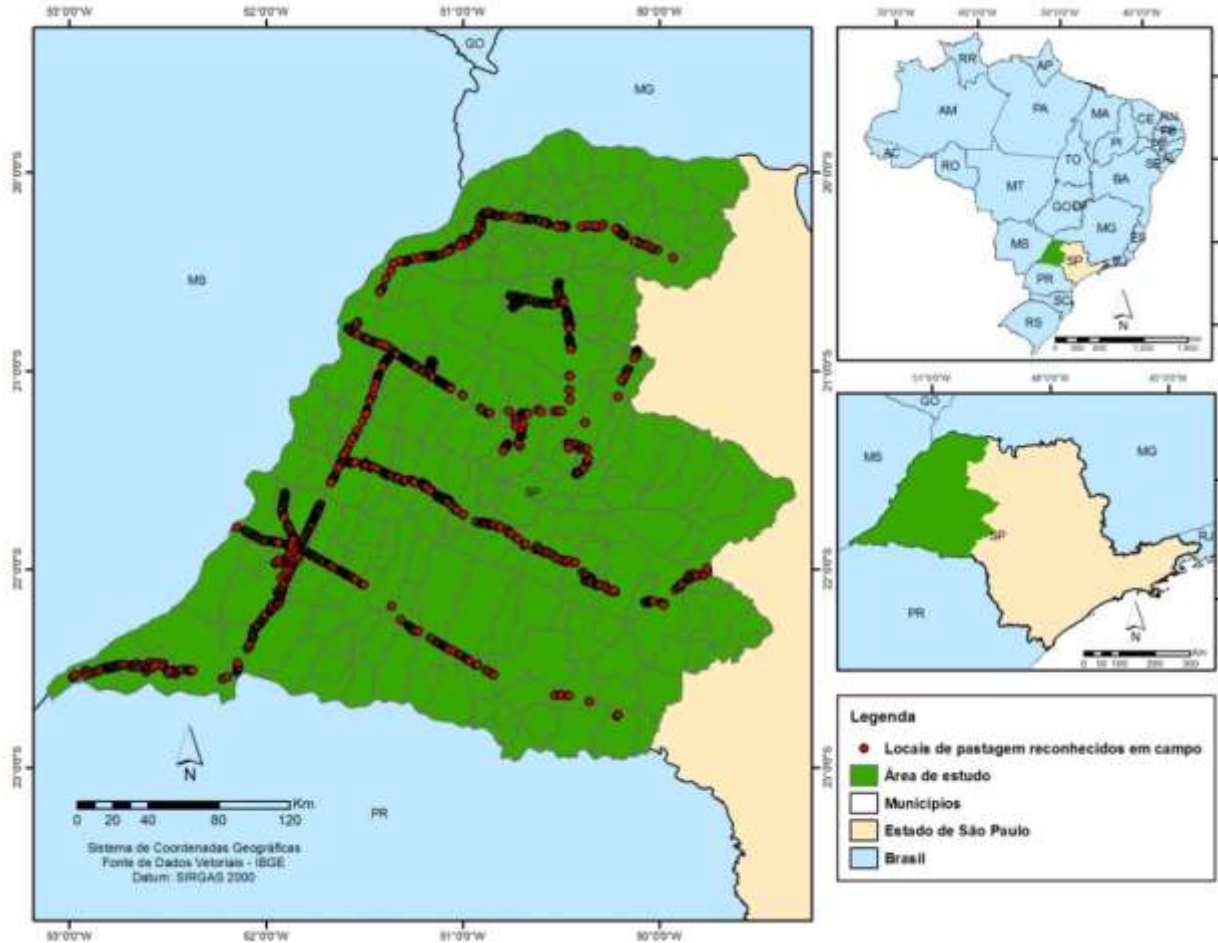
- ◆ Field samples



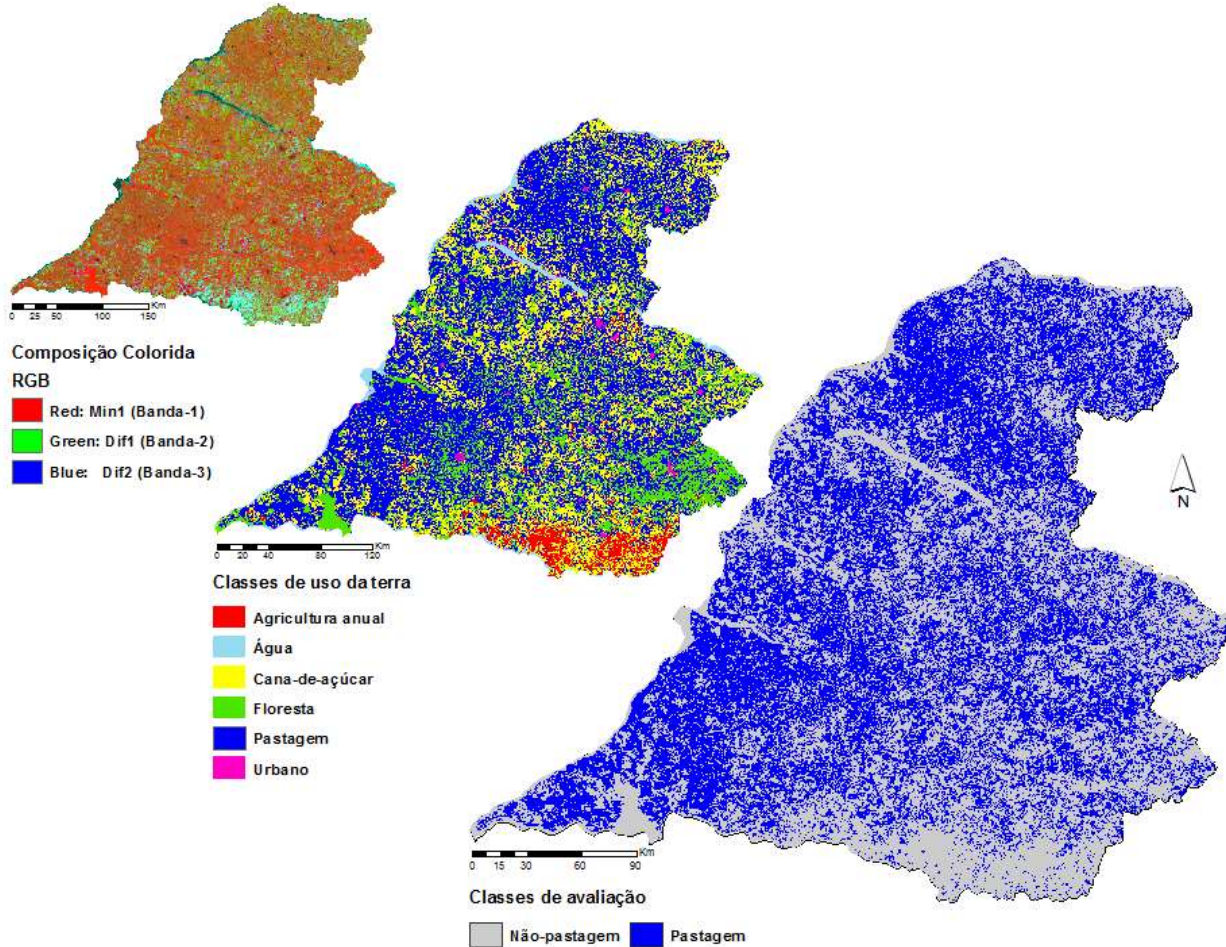
Field campaigns



Pasture Mapping

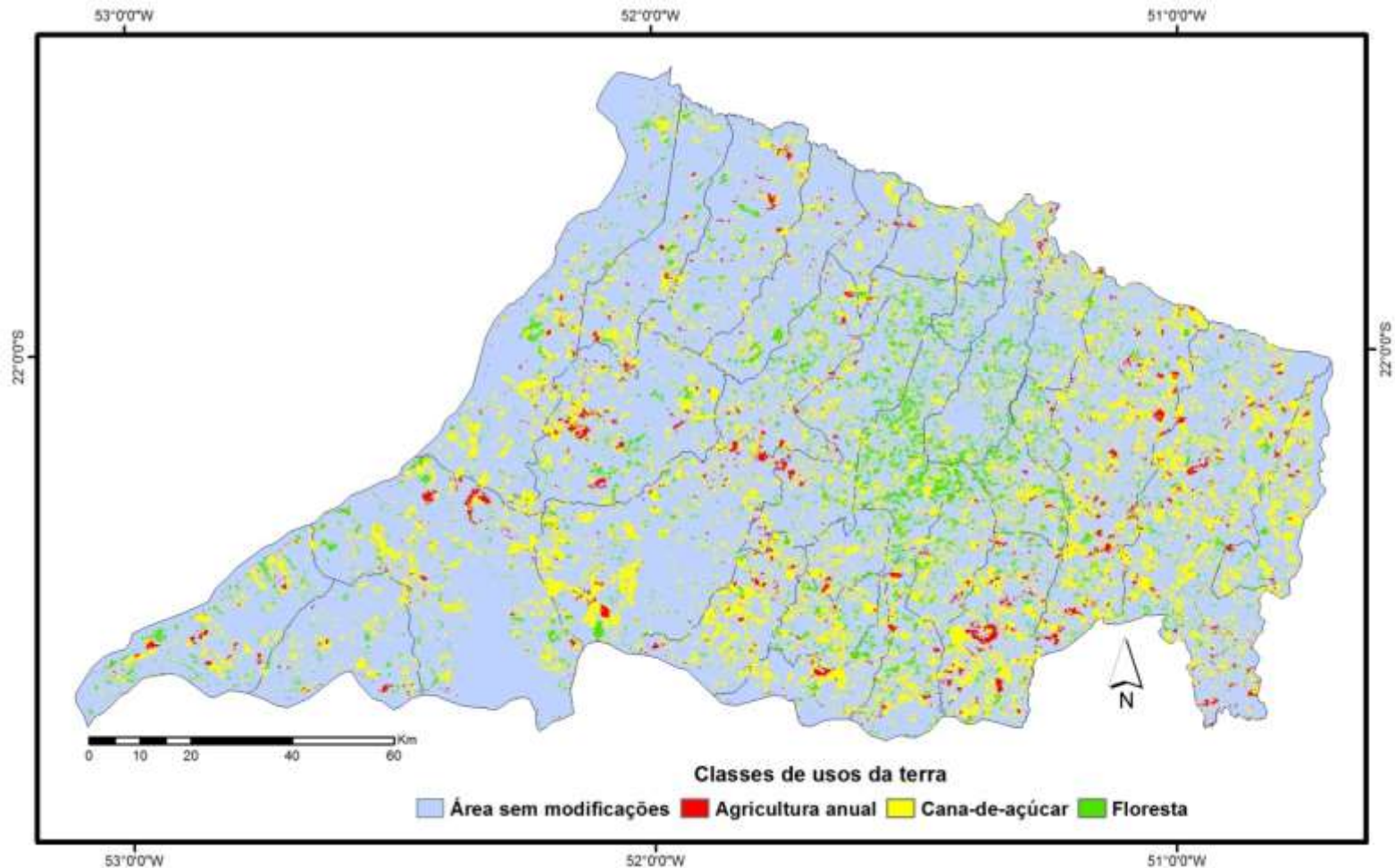


Pasture Mapping



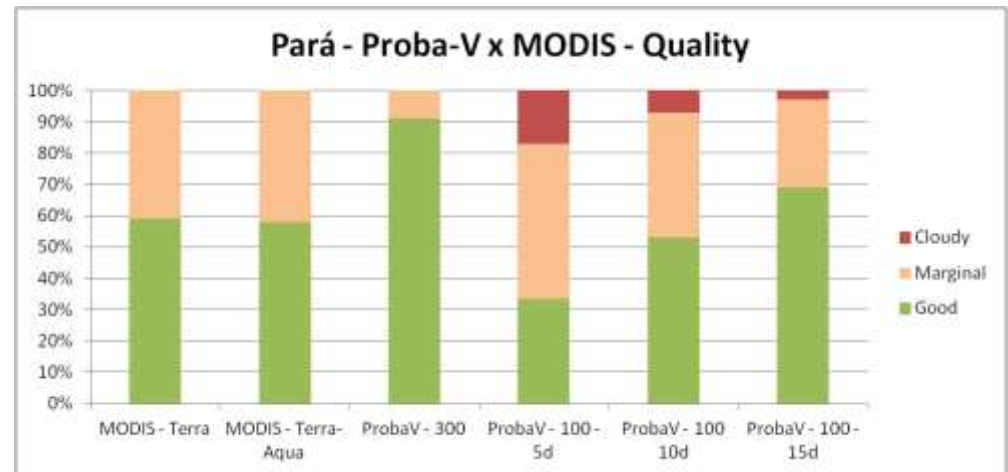
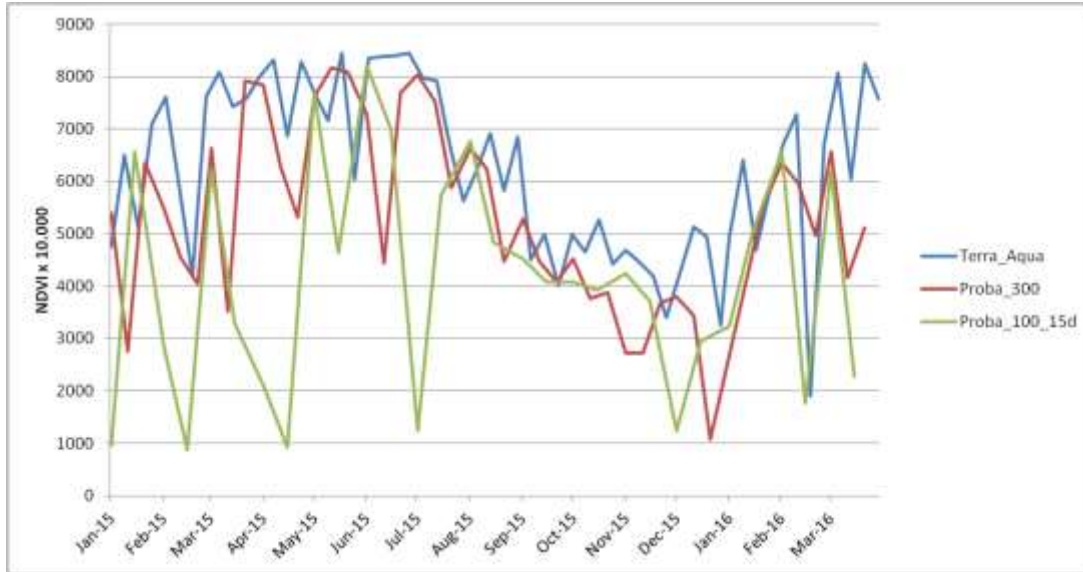
NDVI/MODIS

Replaced Pasture Areas

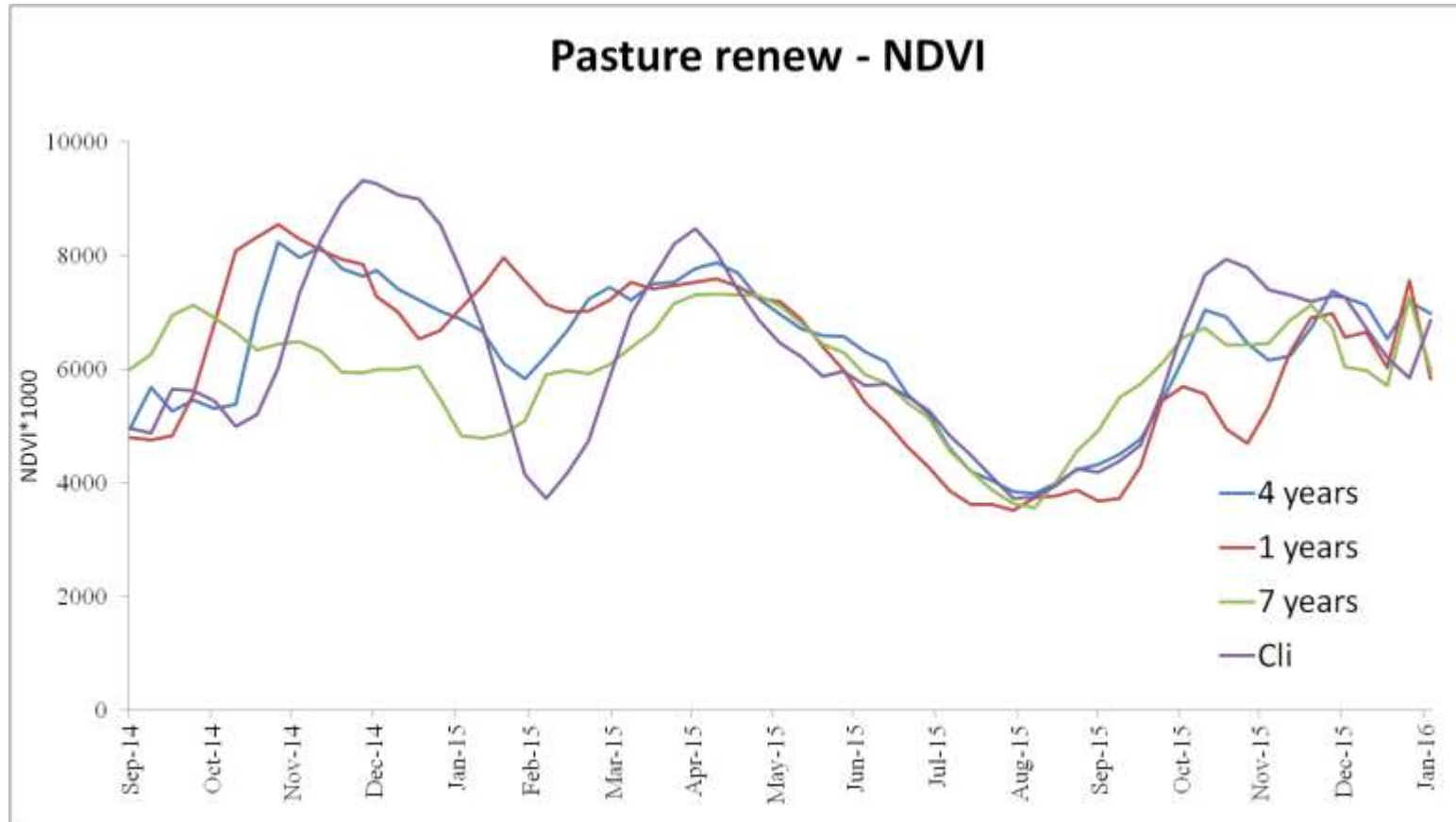


2006-2015

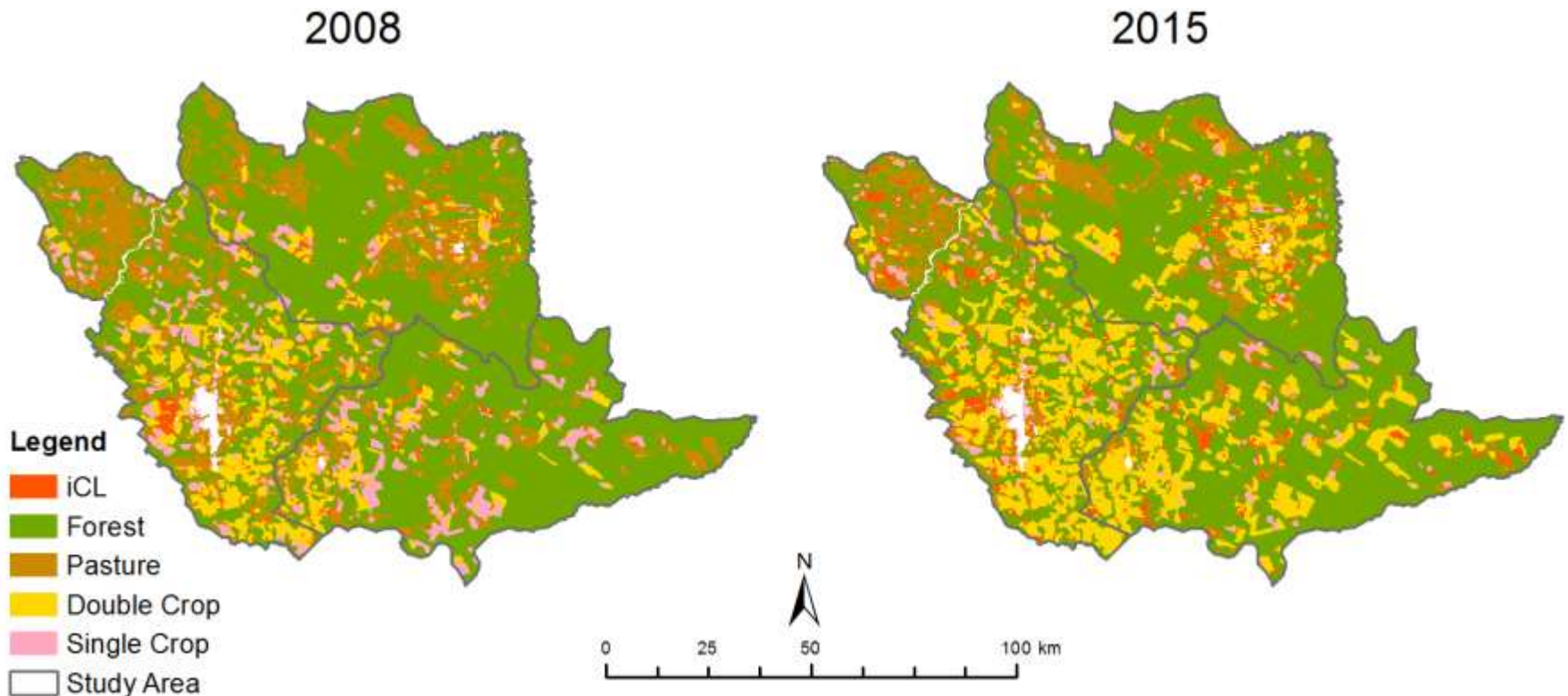
Quality assessment



Pasture management



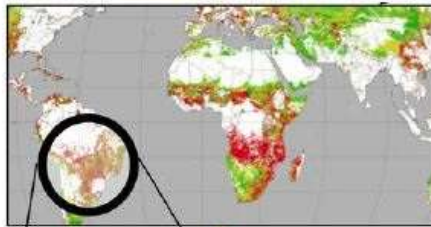
Mapping Integrated Crop-Livestock Systems (Mato Grosso State)



Project

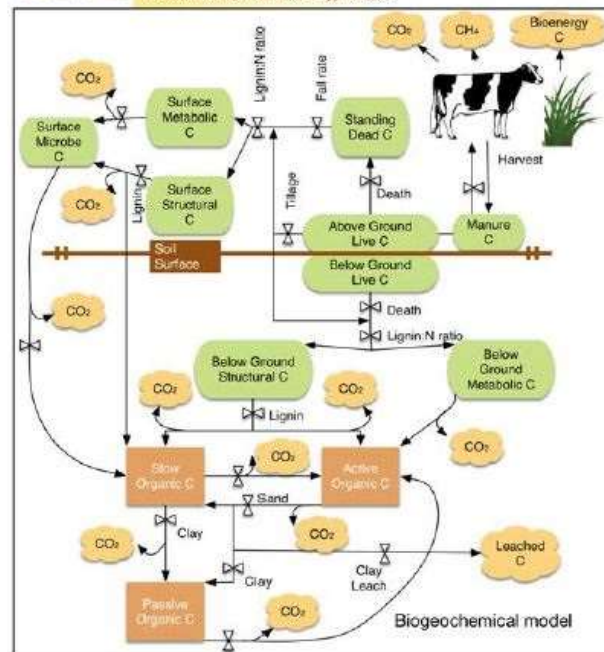
Geospatial & environmental analysis of pastureland intensification for bioenergy

Task 1 Potential for pasture intensification and energy crops



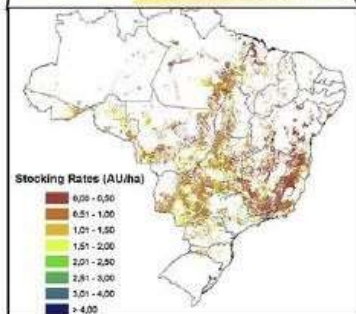
BioCro Energy Crop Model

Task 2 Sustainability of pasture intensification and energy crops



Grant Number: 2014/26767-9

Task 3 Geospatial analysis of Brazilian pasture systems

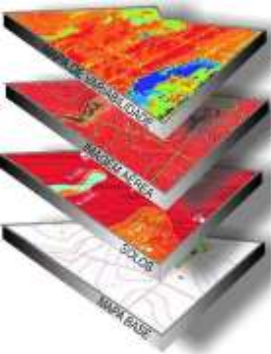


- Remote Sensing
- Modeling

Next steps

- To study the effects of crop-livestock integration systems on soil properties variability (precision agriculture) and carbon flux
- To integrate Sentinel-2 products





UNICAMP

GEO

GRUPO DE ESTUDOS EM GEOPROCESSAMENTO



Faculdade de
Engenharia Agrícola
Unicamp



Thanks!!!

Jansle Rocha jansle.rocha@feagri.unicamp.br

Rubens Lamparelli rubens.lamparelli@gmail.com