



 **GEOGLAM RAPP**  
Rangeland and Pasture Productivity

**Promote the uptake of EO services and data to contribute to the implementation of GEOGLAM RAPP in Balkans and Central Europe**

**Prof. George Zalidis**  
Aristotle University of Thessaloniki, School of Agriculture  
Director of the Laboratory of Applied Soil Science  
Director of the Laboratory of Remote Sensing and GIS  
Scientific Coordinator of I-BEC



 **INTERBALKAN ENVIRONMENT CENTER**  **ARISTOTLE UNIVERSITY OF THESSALONIKI**

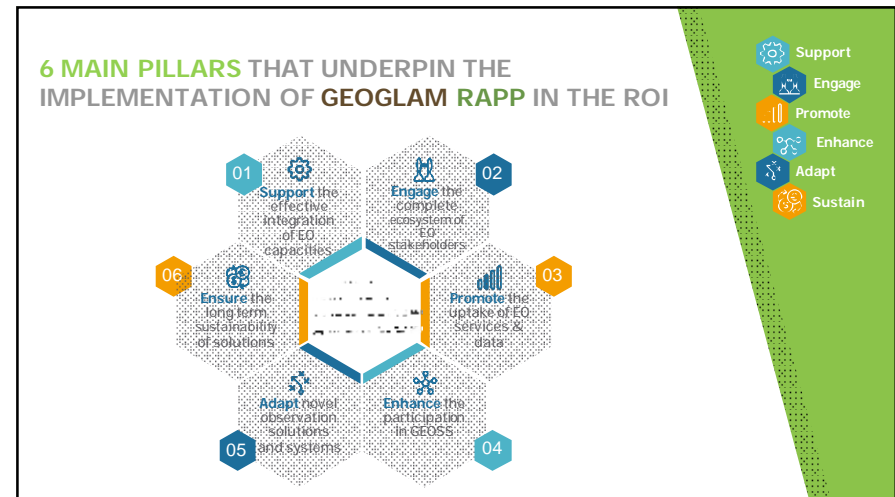
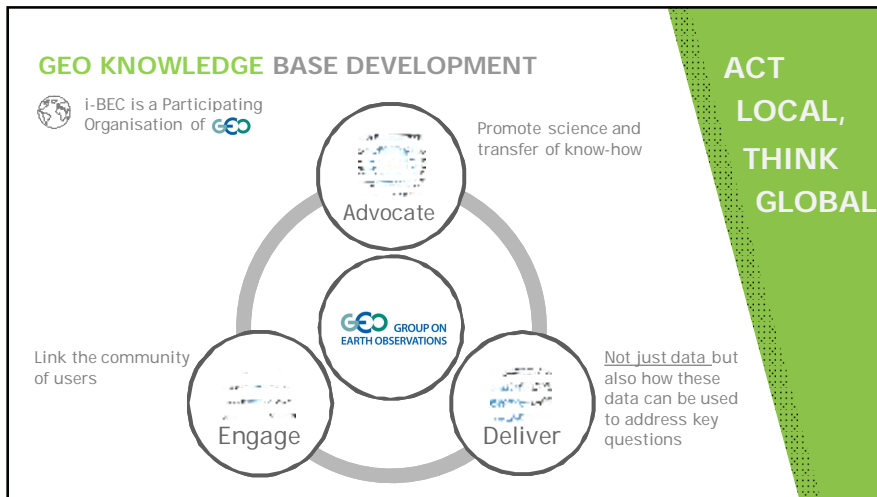
**WHO WE ARE**

“  
We are a **non-profit, mission oriented international** organization linking local and regional communities.

**OUR MISSION**

- ▶ Utilize Earth Observation Data
- ▶ Protect Natural Resources applying **NEXUS Approach**
- ▶ Stakeholder Engagement
- ▶ R&D of new Products & Services






### UNDERSTANDING THE EO LANDSCAPE IN THE ROI

 Support

Create a **comprehensive picture of the available EO** in the ROI to support the establishment of integrated EO services that meet regional needs


Enhance the **current knowledge** of existing EO capacities

Identify the **gaps** and the **maturity level** of the different countries



BALKANS | NORTH AFRICA | MIDDLE EAST

### ENGAGE THE COMPLETE ECOSYSTEM OF EO STAKEHOLDERS

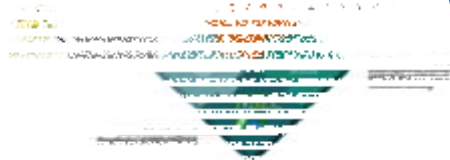
 Engage


Fostering regional cooperation and roadmap for GEO and Copernicus implementation in N. Africa, Middle East, and the Balkans

- 25 partners from 3 continents
- 4 thematic areas (**Improved Food Security**)

Engage public agencies, international scientific and financial institutions and GEO to promote EO in Albania

Actions that meet the real needs (upland monitoring)





**Enhance**

### GEO-CRADLE REGIONAL DATA HUB TOOL A VISION FOR A REGIONAL GEOSS PORTAL

**Regions of Interest**

- Balkans
- Middle East
- North Africa

**Thematic Areas**

- Climate Change
- **Food Security**
- Raw materials
- Energy

**EO categories**

- Space Borne
- Ground Based
- Modelling
- Data Exploitation

**Survey and Desk research**

- 32 national portal and sites
- 12 continental and global portal and sites

**GEOS portal**

- 25131225 datasets

**DataHub**  
Access, Search and Share Earth Observation Data for the three regions.



**Promote**

### A REGIONAL SOIL SPECTRAL LIBRARY IN SOUTH-EASTERN EUROPE AND MENA

The thematic priority of **Improved Security** linked with the SDGs

2 NO HUNGER

12 RESPONSIBLE CONSUMPTION AND PRODUCTION

- ▶ Building of a Regional Standardized SSL [Task 4.2]
- ▶ The most diverse SSL in the RoI (>1500 Soil Samples)
- ▶ Significant & Robust Results via Machine Learning Models
- ▶ Part of the Data Hub of GEO-CRADLE
- ▶ **Open To All**



### NOVEL OBSERVATION SOLUTIONS: THE INVICTUS PROPOSAL – H2020 SC5-18-2017



Member of the Advisory Board



**GEOGLAM RAPP**  
Rangeland and Pasture Productivity



Develop and test an integrated, in situ driven solution (UAVs, crowdsourcing, in-situ sensors) for effective observation of essential variables

---

- **INVICTUS RAPP pilot:** Determination of Rangeland and Pasture Productivity through reinforced use of Earth Observations
- Concretely contribute to the work of GEOGLAM –RAPP
- **Pilot study in Hungary** designed to meet the requirements of GEOGLAM - RAPP



### NEW OPPORTUNITIES AND MARKET DEVELOPMENT OF THE GREEK EARTH OBSERVATION COMMERCIAL SECTOR





- ▶ The 1<sup>st</sup> commercial monitoring effort of grasslands in Greece
- ▶ Develop novel solutions for and with end users



**UAV and Mobile Soil Sensor System** [vis-NIR Spectrometer]



**Field Diagnostic Toolbox**  
Complete Set of Measurements in the field  
**Precise – Instant – Low cost**



**Working Together** with Greek Ministry of Agriculture

STRATEGIC DEVELOPMENT OF A TRANSNATIONAL AND INTERNATIONAL INITIATIVE IN THE BALKAN REGION



Under the Auspices of

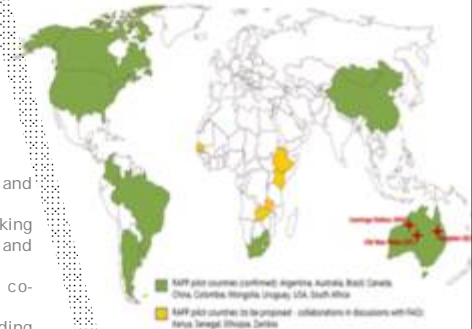


1<sup>st</sup> Round Table  
Greece, 17 June 2017

- ▶ Establish a regional network towards a regional implementation of GEO vision in the area through the establishment of a **GEOBALKAN initiative**
- ▶ Establish a **new interregional funding scheme** among the participating countries
- ▶ Identify and set up a **network of national statistical authorities** to ensure the implementation and monitoring of SDGs

RECOMMENDATIONS FOR AN ACTIVE AND SUSTAINED PARTICIPATION IN GEO-GLAM RAPP

- Build synergies with **on-going projects** and **Regional Initiatives**
- Use the Data Hub as a platform for making available the GEO-CRADLE pilots' data and results
- Establish an European GEOGLAM-RAPP co-leader office
- Explore and Participate in Funding Opportunities : The PRIMA initiative 2018





Thank you

[www.i-BEC.org](http://www.i-BEC.org)

Find us at:

